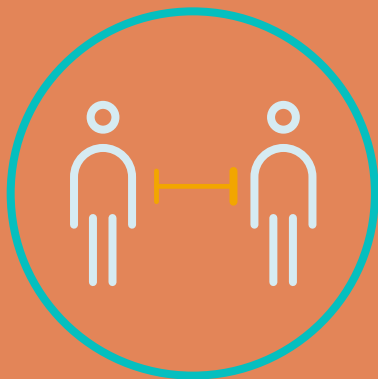


Updated on May the 30th, 2021



Health Guide 2021

Camping Méditerranée Plage

Introduction

This year again, we have to stand firm and impose some constraints on ourselves to beat the virus. These precautions will be applied for the good of all and in good intelligence, but rest assured that the good mood and the pleasure of your holidays will also be preserved. The Mediterranean climate and the beach will help us to overcome some of the constraints still present this season.

Please take into account the advice in this guide for the health of all.

This guide is subject to change according to future health conditions and the instructions of the competent authorities. Please come back to the online link in order to consult any updates.

Summary

of health measures

(click to go directly to the pages)

Reception	4
Playgrounds	5
Kids Clubs	6
Animation Area	7
Aquatic Area	8
Small Swimming Pool	9
Grand Bar • Crêperie	10
Restaurant • Snack	11
Bakery	12
Supermarket	13
Common Sanitary Facilities	14
Rental Accommodation	15
Hairdressing	16
Laundry	17
Beach	18

Reception

- Mask must be worn
- Installation of Plexiglas on the reception desk
- Cleaning and disinfection of the premises every morning
- Entrance through the main door, exit through a side door, except for handicapped standards
- Mask must be worn inside
- Only 1 person per family inside
- Limitation to 1 person at the same time per counter
- Hydroalcoholic gel dispenser
- Full payment of the stay before arrival in order to proceed to a dematerialized registration.
- Keys, bracelets and various documents will be directly put in place in the rental units.
- Sending invoices by e-mail to limit paper transmission
- Disinfection of credit card devices after each use
- Brochures and loan books distributed by staff
- No access to the internet space

Playgrounds

For our adventurous cherubs...

- Wash your hands on arrival
- Avoid close proximity
- Parents responsible for their children and for the respect of health instructions

Barrier gestures: 2 meters distance

Kids Clubs

**4 to 12 years old,
fun and games with our animators!**

- On registration the day before according to availability.
- 10 children maximum per club
(2 groups of max. 10 per age group with 1 facilitator each)
- Assignment of availabilities for an access to all
- Wash your hands on arrival
- Initiation to barrier gestures at the beginning of each session
- Animations only outside
- No immediate proximity between people

Barrier gestures: 2 meters distance

Animation Area

Daily evenings for all in July and August

- Wash hands with alcohol-based hand sanitizer or soap before entering the house
- Ball games, bicycles and scooters are not allowed in the animation-stage area.
- No immediate proximity between people
- Open access to the table tennis tables (2 balls)
- Open pétanque courts (2 piglets)

Barrier gestures: 2 meters distance

Aquatic Area

Swimming pool area «Méditerranée Plage» Opening on May 19th

- Footbathing and hand washing mandatory
- Output clearly separated from input
- Sun baths grouped in pairs with a 2-metre gap between each grouping.
- Do not move the sunbeds
- Maximum number of people*:
 - pool 1: 97 people,
 - pool 2: 120 people
 - water park complex: 1000 people*(numbers never reached in previous years)
- Setting up aquagym and aquabike with respect of distance measures and limitation of the number of people - on reservation only
- Crazy Dances around the largest pool with respect to physical distance.

Slides

- Defined access times
- 4 people maximum on the stairs and platform
- Queuing management to respect the distancing
- Immediate exit from the pool on arrival

Small Swimming Pool

Swimming pool «Mer & Nature»
heated at the opening

Opening on May 19th

Thursday 13 May, Friday 14 May and Saturday 15 May,
2 hours of aquagym in the small (heated) pool.

- Footbathing and hand washing mandatory
- Output clearly separated from input
- Maximum number of people: swimming pool + beach: 30 people
- 3 people maximum at the same time in the jacuzzi

Barrier gestures: 2 meters distance

Grand Bar • Crêperie

Takeaway service : Opening on May 8th

Terrace service : Opening on May 19th

- Mask must be worn when moving in a partially covered area.
- Cleaning and disinfection of the premises every morning
- Plexiglas for protection at checkouts
- Provision of hydroalcoholic gel
- Marking on the ground
- Direction of traffic: in / out
- Only one person per family to order
- Removal of counter stools
- Disinfection of the TPE after each use
- No immediate proximity between people
- Closing during curfew hours

Restaurant • Snack

Takeaway service : Opening on May 8th

Terrace service : Opening on May 19th

- Mask must be worn when moving in a partially covered area.
- Cleaning and disinfection of the premises before each service
- Requirement for staff to wash their hands every 30 minutes
- Wearing of the mask for personnel
- Provision of hydroalcoholic gel
- No individual «menu» card, menu on slate
- Offer of take-away products
- Removal of counter stools
- Only one person per family to order or pay at the counter
- Disinfection of the TPE after each use

Bakery

Opening on May 8th
Bread baked all day long

- Mask must be worn
- Cleaning and disinfection of the premises every morning
- Provision of hydroalcoholic gel
- Only one person inside the shop at the same time
- Plexiglas protection at the checkout

Barrier gestures: 2 meters distance

Supermarket

Opening on May 8th

- Mask must be worn
- Cleaning and disinfection of the premises every morning
- Plexiglas for protection at checkouts
- Provision of hydroalcoholic gel
- Maximum 2 persons per family inside the store
- Limitation of the number of persons according to instructions of the manager
- Direction of traffic: in / out

Barrier gestures: 2 meters distance

Common Sanitary Facilities

- Mask must be worn
- Wash your hands with hydroalcoholic gel or soap before entering the room
- Waiting area outside (barrier gestures)
- Direction of traffic: entry / exit (only Sanitaire Bleuets)
- Avoid prolonged parking in common areas.
- Wearing the mask in common areas
- The sanitary is cleaned twice a day and disinfected 4 times a day.

Barrier gestures: 2 meters distance

Rental Accommodation

- Cleaning and disinfection of the accommodation according to a protocol validated by the authorities (*Cleaning and disinfection of the accommodation may take longer than usual*).
- A Covid-19 referent within our team
- It is forbidden to sleep without sheets, brought by the customer or provided by the campsite.
- It is preferable that the customer brings his own duvets and **pillows**.
- To encourage as much as possible the rotation of accommodation between clients according to the occupation of the campsite.

Instructions subject to modification in accordance
with health developments.

Barrier gestures: 2 meters distance

Hairdressing

Opening on May 11th

- Mask must be worn when you move
- Wash your hands with hydroalcoholic gel when you arrive.
- Lounge disinfected every day of use
- 1 single customer at the same time in the living room
- Mandatory mask in the living room
- Use of disposable towels and bathrobes

Laundry

Opening on May 8th

- Mask must be worn
- Cleaning and disinfection of the premises every morning
- Wash hands with hydroalcoholic gel or soap on arrival.
- Waiting area outside the laundromat (barrier gestures)
- Avoid prolonged indoor parking.
- Wearing of the mask is compulsory in common areas
- Clean the buttons on the machine at the end of use.

Barrier gestures: 2 meters distance

Beach

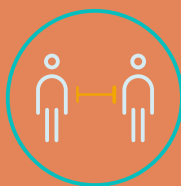
Your natural space in complete freedom

FREE-ACCESS BEACH

Barrier gestures: 2 meters distance



Thanking you
for your understanding,
enjoy your holiday to the fullest!



Camping Méditerranée-Plage
Bord de Mer • 34450 Vias-Plage • France

Tel.: +33(0)4 67 90 99 07

<https://www.mediterranee-plage.com>

GPS : 43°16'56.2"N 3°22'15.9"E